



**ELITE
CIRCUIT**



BADMINTONSKA
ZVEZA SLOVENIJE



I FEEL SLOVENIA LI-NING OPEN 2025

I FEEL SLOVENIA LI-NING OPEN 2025

Sport hall Centre Dras

Pohorska ulica 57, 2000 Maribor

14th-18th MAY 2025

(Qualifying rounds - Wednesday 14th May and Thursday 15th May)

International Series Tournament

Part of the BADMINTON EUROPE Elite Circuit

(Sanctioned by the Badminton World Federation)

Prize Money: \$5.000

* * *

Tournament Director

MATEVZ SREKL

All communications to:

Badminton Association of Slovenia, Ostrovharjeva 4, 1215 Medvode

Mob : + 386 31 325 194

E-mail: matevz.srekl@gmail.com

Website: <https://slovenia-open.badminton-zveza.si/>

Entries Close: Tuesday 15th April 2025



**ELITE
CIRCUIT**



BADMINTONSKA
ZVEZA SLOVENIJE



I FEEL SLOVENIA LI-NING OPEN 2025

Organizer Badminton Association of Slovenia, Ostrovrharjeva 4, 1215 Medvode

Venue Sport hall Centre Dras, Pohorska ulica 57, 2000 Maribor

Referee Marek Krawczyk (POL), m.krawczyk@pzbad.pl

Deputy Referee Jožef Kuprivec (SLO), jozef.kuprivec@gmail.com

Schedule All competitors must be prepared to play at the times determined for the events for which they have entered. The Order of Play is:

Wednesday 14th May 2025	
9.00 am	Qualifying Rounds
Thursday 15th May 2025	
9.00 am	Qualifying Rounds
Friday 16th May 2025	
09.00 am	Main draw all events
Saturday 17th May 2025	
9.00 am	Main draw all events
4.00 pm	Quarterfinals
Sunday 18th May 2025	
10.00 am	Semi-finals
1.00 pm	All final matches

The final frame schedule shall be made at least 20 days before the start of the tournament and shall be published on the organizer's website.



ELITE
CIRCUIT



BADMINTONSKA
ZVEZA SLOVENIJE



I FEEL SLOVENIA LI-NING OPEN 2025

Entry fees

Singles: 70 Euro per player, **Doubles:** 60 Euro per player/event

The entry fees must be paid at the same time as the entries are submitted.

The Member that enters a player into a BEC Elite Circuit tournament is responsible for paying the entry fees for that player. The entry fees become due if a player is entered and has not been withdrawn when the entry deadline passes.

The entry fees will not be refunded in the case of a withdrawal. For all the withdrawn players the Organizers can invoice the entry fee to the relevant Member.

PAYMENTS: Badminton Association of Slovenia will issue an invoice and send it to the player's federation.

The bank transfer information:

BADMINTONSKA ZVEZA SLOVENIJE

Ostroviharjeva 4, 1215 Medvode, Slovenija

Bank: Delavska hranilnica d.d., Miklošičeva 5, 1000 Ljubljana, Slovenia

S.W.I.F.T. Code: HDELSI22,

IBAN Code: SI56 6100 0000 1884 378



ELITE
CIRCUIT



BADMINTONSKA
ZVEZA SLOVENIJE



I FEEL SLOVENIA LI-NING OPEN 2025

Entries

All entries must be made by using the BWF Online Entry System:

<https://bwf.tournamentsoftware.com/tournament/96E736F5-D40C-42DB-BD01-33A8AE82C085>

Entries must be submitted not later than:

- Tuesday 15th April 2025 at 23:59 BWF HQ time (GMT +08:00)
- 17:59 Local time for tournament organizer (CEST)

In accordance with regulations 9.2 and § 9.3 in BWF Statutes, Section 5.3.3.1: World Ranking System, an event must contain at least 8 (eight) competitors in the first published version of the main draw. If the required number of competitors is not met in the first published version of the main draw, this event shall not count towards any ranking, i.e. BEC Elite Circuit Ranking and BWF World Ranking.

In accordance with regulation § 9.4 in BWF Statutes, Section 5.3.3.1: World Ranking System, the first published version of the main draw of an event must contain at least 1 (one) entry from a Member other than the hosting Member. If an event does not contain at least 1 (one) entry from a Member other than the hosting Member, this event shall not count towards any ranking.

Badminton Europe is not liable for any costs incurred by third persons (players, coaches, umpires, team managers etc.) because of an event not having enough competitors to count for the rankings.

Players cannot be entered unless they already have a BWF ID number. In case you wish to enter players, who do not have a BWF ID-number, please contact the BWF office well in advance of the tournament, so that the players concerned can get a BWF ID-number before the closing date of the tournament.



**ELITE
CIRCUIT**



BADMINTONSKA
ZVEZA SLOVENIJE



I FEEL SLOVENIA LI-NING OPEN 2025

No late entries will be accepted.

Organizers are allowed to refuse entries if players have outstanding fees from the previous year.

Compliance with BWF GCR 7.9: "In making or authorizing entries, the Member concerned is reconfirming its acceptance, and acceptance by the Players being entered, of the BWF's regulations and Disciplinary processes."

Events

Men's Singles, Women's Singles, Men's Doubles, Women's Doubles, Mixed Doubles. The number of players/pairs to be accepted for the main events in Singles 48, Mix Doubles 32 and Doubles (men's and women's) 24.

System of the Competition

K.O. system according to the Laws of Badminton and General Competition Regulations of the BWF.

Eligibility

Participation is open to players of any National Association recognized by the BWF.

Shuttles

Li-Ning G700

Courts

5 courts Li-Ning

Prize money

5.000 USD

	MS	WS	MD	WD	XD
Winner	500	500	600	600	600
Runner up	275	275	350	350	350
Semi-finalist	150	150	-	-	-

25% of the value of each prize money will be deducted, due to local tax rules.

The Organizer will pay the prize money in cash at the prize giving ceremony to the players/pairs competing in the finals. Losers in MS



ELITE
CIRCUIT



BADMINTONSKA
ZVEZA SLOVENIJE



I FEEL SLOVENIA LI-NING OPEN 2025

and WS semi-finals will get prize money in cash immediately after semi-finals.

Closing date **15th April 2025**

Withdrawals Please ensure that the organizer will be informed immediately when a player has to withdraw, preferably together with the reason for withdrawal. Any withdrawal after the Monday immediately preceding the draw, for any reason whatsoever, renders the Member concerned liable to an amount of USD 150,00 for the inconvenience caused by the withdrawal (as defined in BWF General Competition Regulations).

Last day of withdrawal without penalty – Monday, **5th May 2025**

Any player not showing up for a match at the tournament, without having been withdrawn in advance, renders the Member concerned liable to an additional amount of USD 500,00 for the inconvenience caused by the “no show” (as defined in BWF General Competition Regulations).

Visa If you need Visa for Slovenia, please ask the Slovenian Badminton Association (matevz.srekl@gmail.com) for the official Invitation letter. It is advised to arrange the VISA on time.

Draw Draw will be made by Badminton Europe.
World ranking date used for M&Q report – **15th April 2025**
M&Q report release date – **18th April 2025**
World ranking date used for seeding and draws –
22nd April 2025
Withdrawal deadline – **5th May 2025**
Draw date – 6th May 2025

Date for the team managers meeting: Tuesday, 13th of May 2025, 20.00 Sporthall Centre Dras



**ELITE
CIRCUIT**



BADMINTONSKA
ZVEZA SLOVENIJE



I FEEL SLOVENIA LI-NING OPEN 2025

Condition of play

the tournament will be played in full accordance with the Laws of Badminton and the General Competition Regulations adopted by the BWF as well as the BEC Elite Circuit Regulations.

Competitors must be prepared to play at the times determined by the events for which they have entered. Competitors will be scratched if not ready to play when called.

Local transport

Free transport will be provided from the airport (Ljubljana Joze Pucnik Airport), train stations (Ljubljana) to the venue/official hotels if accommodation has been booked in official provided hotels. In case accommodation is not done in an official hotel we will charge 30€ for transport one way.

More information about transport prices will be available on the event's portal where you need to make a transport reservation.

Link to portal: <https://slovenia-open.badminton-zveza.si/>

The deadline is 03.05.2025

Transport from Graz airport is also possible, but at a cost of 20 € per person one way.

Transport from Zagreb airport is also possible, but at a cost of 30 € per person one way.

Transport to Graz (Austrian Open 2025)

On Tuesday 20th of May transport will be organized from Hotel Dras to Graz (requested hotels). So prebook your seat on <https://slovenia-challenge.badminton-zveza.si/>

Price: 20,00 EUR per person.



ELITE
CIRCUIT



BADMINTONSKA
ZVEZA SLOVENIJE



I FEEL SLOVENIA LI-NING OPEN 2025

Players shall not plan their departure less than 2 (two) hours after their last match is planned to conclude. If a player is unable to compete due to early departure, he/she shall be penalized by Forfeiture of rewards (removal of Elite Circuit ranking points and shall not be awarded prizes or prize money). Badminton Europe shall propose to BWF that the gained BWF ranking points are also removed. (Regulation 9.5 in Badminton Europe's Elite Circuit Regulations)

Accreditation Accreditations for participants need to be requested through our portal: <https://slovenia-challenge.badminton-zveza.si/>

Entry to the sports hall without accreditation will not be possible.

The deadline is 5.5.2025

Please be aware that requests for accreditation and/or transport after the deadline will be created and printed on site and will be charged at a fee of 20 euros per person, as it considerably increases the last-minute workload and costs to arrange everything in time.

Medical service

People from First aid people will be present in the Sports hall during the tournament.

Doping Control According to Slovenian Law Drug Testing may be carried out on a random basis at any time.

Doping control in badminton, in accordance with BWF Anti-Doping Regulations, is conducted out-of-competition and in-competition with the collection of urine and/or blood samples.

Athletes are responsible for any substance found in their body. Before an athlete takes any medication, they should check with



ELITE
CIRCUIT



BADMINTONSKA
ZVEZA SLOVENIJE



I FEEL SLOVENIA LI-NING OPEN 2025

their doctor, and if necessary, get a Therapeutic Use Exemption (TUE).

For more information about anti-doping, please visit the BWF website: <https://corporate.bwfbadminton.com/integrity/anti-doping-overview/>

Clothing and

Advertising

Color, design, lettering and advertising on clothing shall be regulated by BWF General Competition Regulations § 20 to 24. Any breach of these regulations will be forwarded to BWF.

It is mandatory that partners in doubles wear the same color of the T-shirt and shorts/skirts at all time during play in both the qualification and the main draw. Failing to do so shall result in an administrative fine of 100,00 EUR.

In applying these regulations, the decision of the referee shall be final.

Insurance

Member and/or Organiser may be liable for claims originating from the damages incurred by the participants and/or any other persons, arising from or in connection to the particular BEC Elite Circuit tournament, according to local Law. Badminton Europe is not liable for any such claims, actions, damages, costs or expenses of any nature whatsoever, including but not limited to injury or loss to person or property, arising out of or in any way related, directly or indirectly, to the particular BEC Elite Circuit tournament. It is recommended that Member and/or Organizers purchase a proper Insurance Policy that would cover their potential legal liability.

The organizing Member can cancel a tournament in case of force majeure. Such cancellation must be announced at least 15 days before the start of the tournament. If a cancellation is announced less than 15 days before the start of the tournament, then the Member organizing the tournament is liable for any expenses incurred by third persons (players, coaches, umpires, team managers etc.). Badminton Europe is



ELITE
CIRCUIT



BADMINTONSKA
ZVEZA SLOVENIJE



I FEEL SLOVENIA LI-NING OPEN 2025

not liable for any costs incurred by third persons because of the cancellation of a tournament.

Practice

Can be booked on Tuesday 13th May between 17:00-21:30 (5 courts). You can book 45 min. per court (f.e. 17:00 – 17:45). The practice courts will be the competition courts. Please send your requests until 9th May to jozef.kuprivec@gmail.com using the practice booking form.

Badminton integrity

Section 2.4 of the BWF Statutes (Code on The Prevention of The Manipulation of Competition) relates to anti-corruption and anti-match manipulation, and this code applies to all participants at this tournament.

To protect the integrity of BWF sanctioned tournaments, participants are not allowed to bet in any way on badminton matches, shall respect the principle of fair play, and should not attempt to influence the course or result of a game or match.

Every person has an obligation to report to the BWF any approaches by anyone to gather inside information or to change the outcome of a match(es).

For more information, please refer to BWF's website: <https://corporate.bwfbadminton.com/integrity/anti-match-fixing-overview/>



ELITE
CIRCUIT



BADMINTONSKA
ZVEZA SLOVENIJE



I FEEL SLOVENIA LI-NING OPEN 2025

Accommodation:

All official bookings are made exclusively via the following email:
booking@dras.si

For the I FEEL Slovenia Li-Ling Open 2025 Badminton Tournament, we are pleased to offer a selection of hotels, including our flagship venue, Hotel DRAŠ, which is located directly on-site. All accommodations are carefully selected to provide comfort and convenience for participants and guests.

1. **Hotel DRAŠ**- nothing better than being on the venue spot

Hotel Draš is a fully renovated, modern hotel with 38 comfortable rooms. Located directly at the event venue, it offers convenience, high-quality services, and excellent facilities tailored for both leisure and professional needs, making it an ideal choice for tournament participants and guests.

DRAŠ hotel PER PERSON	SINGLE	DOUBLE	TRIPPLE	QUAD twin + bunk bed
BB	120,00 €	95,00 €	80,00 €	73,00 €
HALF BOARD	125,00 €	105,00 €	85,00 €	80,00 €
FULL BOARD	140,00 €	115,00 €	95,00 €	90,00 €



I FEEL SLOVENIA LI-NING OPEN 2025

2. Hotel HABAKUK- NEW TO OUR PARTNER HOTEL IN 2025- premium hotel

Category: Premium Hotel

Hotel Habakuk is a premium hotel that combines luxury with stunning surroundings. Known for its excellent wellness facilities and high-quality service, it is the perfect choice for guests seeking a more upscale experience. Walking distance to Hotel DRAŠ is approximately **4 minutes**, offering both convenience and exclusivity.

HABAKUK PER PERSON	SINGLE	DOUBLE
BB	110,00 €	75,00 €
HALF BOARD	130,00 €	100,00 €
FULL BOARD	150,00 €	125,00 €





ELITE
CIRCUIT



BADMINTONSKA
ZVEZA SLOVENIJE



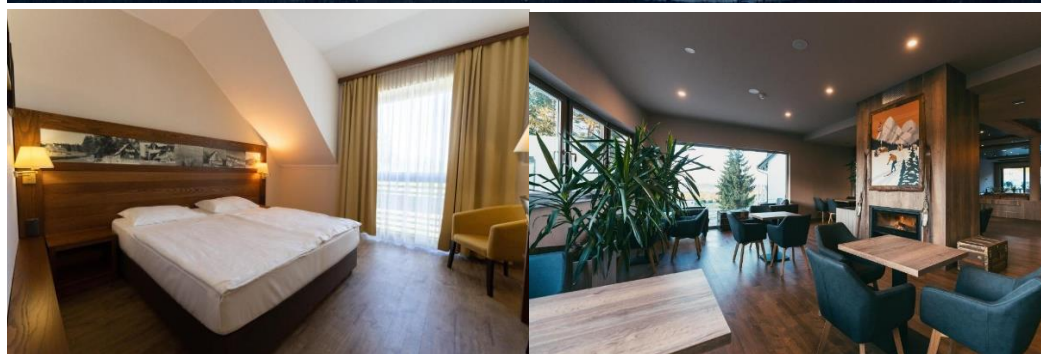
I FEEL SLOVENIA LI-NING OPEN 2025

3. ARENA Hotel – close by and highly rated

Category: Standard Hotel

Arena Hotel provides spacious accommodations and excellent amenities in a picturesque setting. The hotel is ideal for participants seeking both comfort and convenience. Walking distance to Hotel DRAŠ is approximately **5 minutes**, making it easily accessible for guests attending the tournament.

ARENA PER PERSON	SINGLE	DOUBLE
BB	110,00 €	75,00 €
HALF BOARD	130,00 €	100,00 €
FULL BOARD	145,00 €	120,00 €





**ELITE
CIRCUIT**



BADMINTONSKA
ZVEZA SLOVENIJE



I FEEL SLOVENIA LI-NING OPEN 2025

4. Hotel BUTIK- walking distance , comfy , friendly environment

Category: Boutique Hotel

Hotel Butik is a charming boutique hotel offering a blend of modern design and personalized service. Located in a tranquil area, it ensures a relaxing stay while being within easy reach of the tournament venue. Walking distance to Hotel DRAŠ is approximately **7 minutes**.

NOTE! Breakfast is served in a hotel, all other meals are part of DRAŠ HOTEL.

BUTIK PER PERSON	SINGLE	DOUBLE	TRIPPLE	QUAD
BB	€ 95,00	€ 77,50	€ 70,00	€ 67,50
HALF BOARD	€ 110,00	€ 90,00	€ 85,00	€ 75,00
FULL BOARD	€ 120,00	€ 105,00	€ 100,00	€ 85,00

5.VILA MARI – APPART HOTEL- feel like part of family Draš

Villa Mari is a modern and cozy apart-hotel located 200 m from hotel Draš. It serves as an **official dependansa of the Draš Sport Center**, offering guests not only a prime location but also seamless access to Draš's sports and wellness facilities. All meals are in hotel DRAŠ

VILA MARI PER PERSON	DOUBLE	TRIPPLE	QUAD
BB	77,50 €	72,50 €	70,00 €
HALF BOARD	85,00 €	80,00 €	77,50 €
FULL BOARD	105,00 €	87,50 €	85,00 €



ELITE
CIRCUIT



BADMINTONSKA
ZVEZA SLOVENIJE



I FEEL SLOVENIA LI-NING OPEN 2025

Important!

Payment Conditions

- All reservations are confirmed only when the full payment for the service has been received.
- After booking confirmation, a proforma invoice will be sent based on your request.
- **All official bookings are made exclusively via the following email: booking@dras.si.**

Cancellation Policy

- **Up to 14 days before arrival:** No cancellation fee.
- **14–10 days before arrival:** 50% of the total amount.
- **10–7 days before arrival:** 70% of the total amount.
- **6–3 days before arrival:** 80% of the total amount.
- **Within 3 days before arrival:** 100% of the total amount.

For any questions or concerns regarding your booking, feel free to contact us at booking@dras.si.

More information will be published on <https://slovenia-open.badminton-zveza.si/>